

# BOTANY

## EXPERIMENTAL GREENHOUSE SCIENCE KIT



## guidebook



### SCIENCE EDUCATION SET

**WARNING** — This set contains chemicals that may be harmful if misused. Read cautions on individual containers carefully. Not to be used by children except under adult supervision.

## Kit Contents



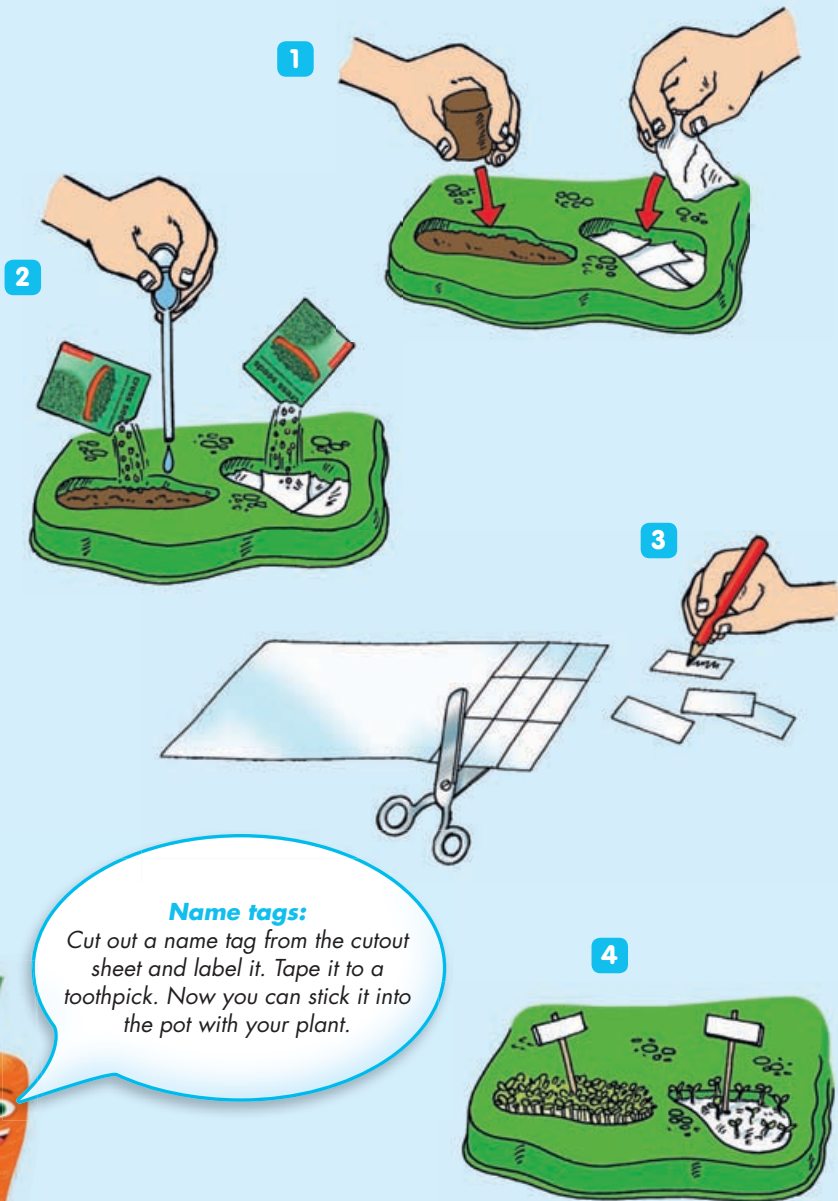
This science kit contains the following parts:

No.	Description	Quantity/Amount	Item No.
1	Greenhouse (floor)	1	708733
2	Greenhouse (dome)	1	708734
3	Plant pot	6	705804
4	Measuring cup (100 ml)	2	708166
5	Measuring cup (30 ml)	3	065100
6	Soil pellet	6	773001
7	Cress seed packet	1	532122
8	Zinnia seed packet	1	708737
9	Scarlet runner bean	1	773000
10	Drinking straw	5	705325
11	Yarn	1	702751
12	Pipette	2	232134
13	Thermometer	1	702280
14	Wooden stick	6	705296
15	Wooden spatula	2	000239
16	Plaster, bag of	1	771052
17	Cut-out sheet	1	708814

Additional household materials you will need: paper towels, knife, scissors, colored pencils, tape, watercolor paints, paintbrush, toothpicks, paper, drinking glass, empty yogurt container, old nylon socks, old wool socks, salt, water, dish liquid, fruits and vegetables (e.g. avocados, lemons, peppers), plant seeds from hardware store or garden center, soil.



# CHAPTER 1: Growing your first plants



### Name tags:

Cut out a name tag from the cutout sheet and label it. Tape it to a toothpick. Now you can stick it into the pot with your plant.



## PROFILE: Dwarf zinnia



Plant about half a centimeter deep, not too close together, and cover with soil.



From the end of April



8–14 Days



Germination temperature 18–22 °C (65–72 °F)



Very little water and fertilizer



July–September



Re-flowers well and can therefore be cut for indoor arrangements.



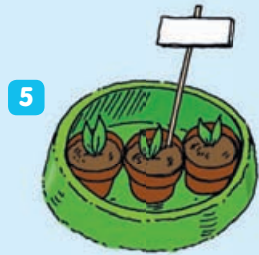
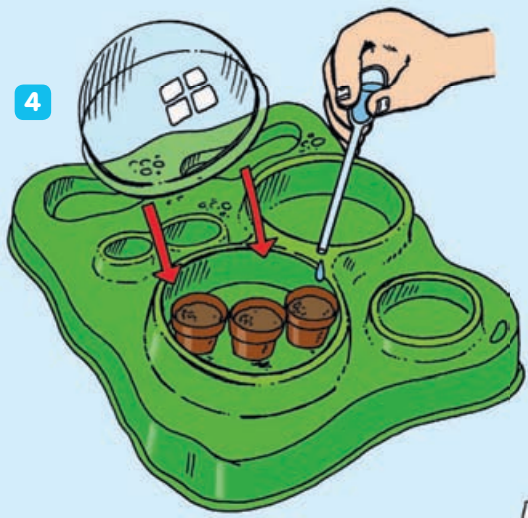
*Zinnias need about a week to germinate. Then you will be able to see the first green sprouts pushing cautiously out of the soil toward the daylight.*



*You will be able to do more zinnia experiments soon. Take a look at Experiments 13 and 15.*



# CHAPTER 1: Growing your first plants



## 30 Blooming branches

3 Weeks

1



If you cut cherry branches in early December and put them in a vase with water, they will bloom by Christmas Eve.



If you put the branches inside, the brightness and heat will send the signal that it's spring. The buds will bloom and leaves will sprout from the twigs. Doing this is called "forcing the branches."



In addition to cherry tree branches, ones from apple, pear, plum, and forsythia trees will also work well. The water in the vase should be lukewarm. Cut the branch at a sharp angle. Have your parents help you with this.